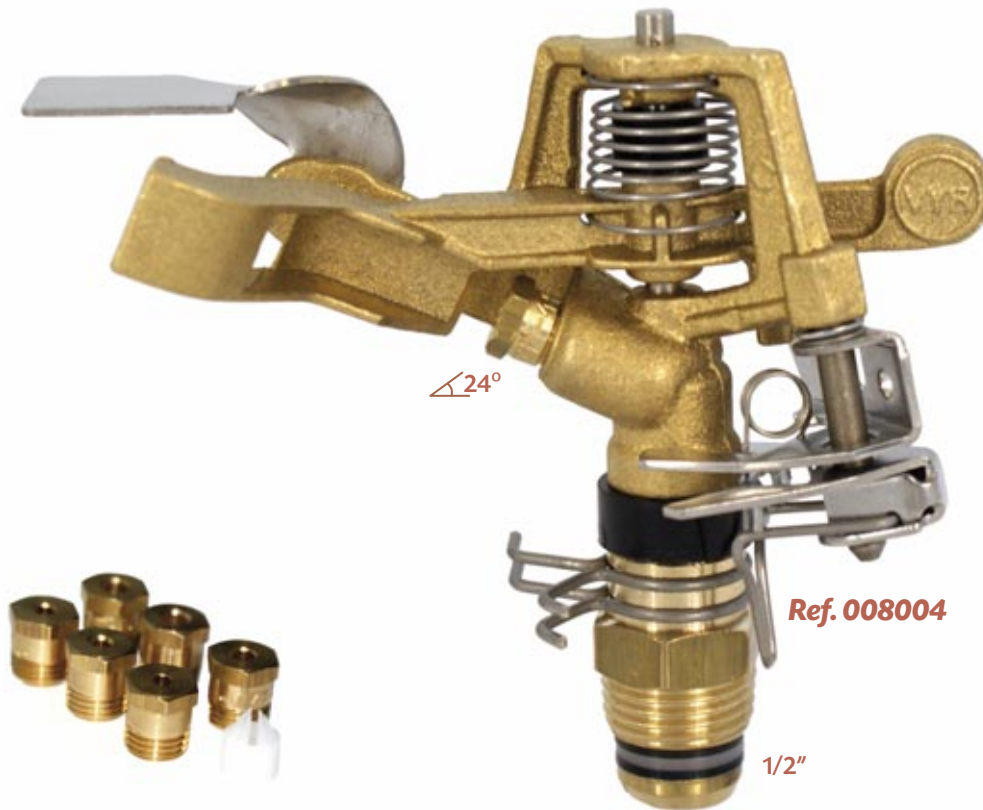


# VYR-80 AG



## VYR-80 AG · Part circle AG

### GENERAL PROPERTIES:

- Riser-mounted impact sprinkler for gardening, agriculture, flower growing and greenhouses.
- 1/2" male connection.
- Made of brass and stainless steel.
- High-resistance rotating joints.
- Arm with anti-splash design.
- Adjustable deflector plate.
- Irrigation area system controlled by rotating clips.
- Adjustable jet breaker diffuser pin.

### TECHNICAL SPECIFICATIONS:

- Range distance: 9 - 14 m / 30 - 46 ft.
- Flow: 460 - 1180 L/H / 121 - 312 GPH.
- Working pressure: 1,5 - 4 BAR / 22 - 58 PSI.
- Area: Full or part circle.
- Nozzles: A multi-jet nozzle.
- Trajectory angles: 24°
- Maximum stream height: 2.6 m / 8,5 ft.
- Rotation time: Adjustable. Depending on the pressure and the nozzles, the rotation will be constant and continuous.
- Uniformity coefficient higher than 90% in areas of 11x11R, 12x12T and 12x13T (meters).

### APPLICATIONS:

- Public and private gardens.
- Horticultural plantations, floriculture and fruit trees.

### MEASUREMENTS:

- Height: 14 cm / 5,5 in.
- Width: 12 cm / 4,7 in.
- Weight: 266 g / 0,58 Lbs.
- Units per box: 75

### OPTIONS:

- Self-compensating flow control valves of 1.5 and 2 BAR
- Assembled as a "complete support kit" on a 1.3 or 0.7 m galvanized stake with microtube and connectors.
- Assembled as a "complete support kit" on a brass, aluminium or plastic spike.
- Assembled as a "complete support kit" on an aluminium base.

### MODELS:

- Ref. 008001:** Full circle with deflector.
- Ref. 008002:** Full circle.
- Ref. 008004:** Part (or full) circle with deflector.
- Ref. 008005:** Part (or full) circle.

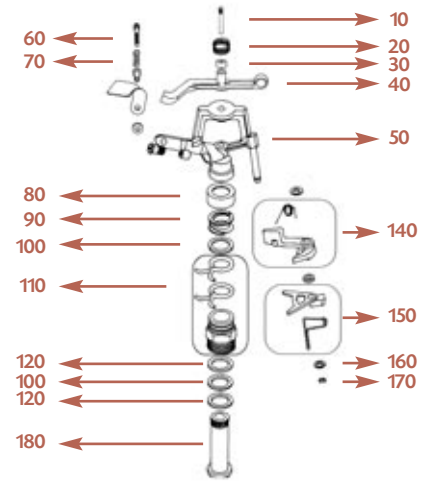
This sprinkler is strong and durable enough to work for many years in urban gardens in tough conditions, caused by vandalism and impact from maintenance equipment.

## TABLES & PARTS

### Technical guidance table VYR-80 AG

NOZZLE	Spacing (m) / Precipit. rate (mm/h) Spacing (ft) / Precipit. rate (in/h)						
	BAR PSI	9x9 30x30	9x9 T 30x30 T	10x10 33x33	10x10 T 33x33 T	10x12 33x39	12x12 T 39x39 T
3 mm 0,2"	2,5	7,7	7,4	6,3	5,3	4,6	3,5
	36	0,30	0,29	0,25	0,21	0,18	0,14
	3	8,2	7,8	6,6	6	5,2	4
3,5 mm 9/64"	44	0,32	0,31	0,26	0,24	0,20	0,16
	3,5	8,9	8,4	7,9	7,6	6,8	5,5
	51	0,35	0,33	0,31	0,30	0,27	0,22
4 mm 5/32"	2,5	9,7	9	7,6	7,3	6,6	5,5
	36	0,38	0,35	0,30	0,29	0,26	0,22
	3	10,6	9,8	8,3	8	7,2	6
3,5 mm 9/64"	44	0,42	0,39	0,33	0,31	0,28	0,24
	3,5	11,5	10,6	8,9	8,6	7,8	6,5
	5	0,45	0,42	0,35	0,34	0,31	0,26
4 mm 5/32"	2,5	12	11,1	9,3	9	8,1	6,8
	36	0,47	0,44	0,37	0,35	0,32	0,27
	3	13,1	12,1	10,2	9,8	8,9	7,4
3,5 mm 9/64"	44	0,52	0,48	0,40	0,39	0,35	0,29
	3,5	14,2	13,1	11	10,6	9,6	8
	5	0,56	0,52	0,43	0,42	0,38	0,31

T: Triang. CU < 85% CU 85-88% CU 88-92% CU > 92%



### Performance nozzle tables VYR-80 AG

NOZZLE	3 mm 0,2"		3,5 mm 9/64"		4 mm 5/32"	
	BAR PSI	L/H GPH Ø m Ø ft	L/H GPH Ø m Ø ft	L/H GPH Ø m Ø ft	L/H GPH Ø m Ø ft	L/H GPH Ø m Ø ft
1,5	450	20	580	21	730	22
22	119	66	153	69	193	72
2	510	21	660	22	850	23
29	135	69	174	72	224	75
2,5	550	22	740	23	950	24
36	145	72	195	75	251	79
3	630	23	810	23	1030	24
44	166	75	214	75	272	79
3,5	680	23	870	24	1110	25
51	180	75	230	79	293	82
4	720	24	930	25	1180	26
58	190	79	246	82	312	85

Solamente para aspersores circulares.  
Only for full circle series.

- For optimum distribution avoid use in shady areas.
- Sprinklers will be supplied with standard nozzles unless otherwise specified.
- In order to calculate the flow, add the flows of the two nozzles. The range of the rear nozzle must be less than that of the main nozzle.
- These results has been obtained at indoor laboratory with 0 m/seg win velocity. Outdoor results may change range distances.

Standard Ø: Diameter range

